

Alex Byard
Spring 2012
Arch 442 – BIM Studio
BIM Wiki

Revit Architecture to Google SketchUp

Step 1: Create the *Revit Architecture* model.

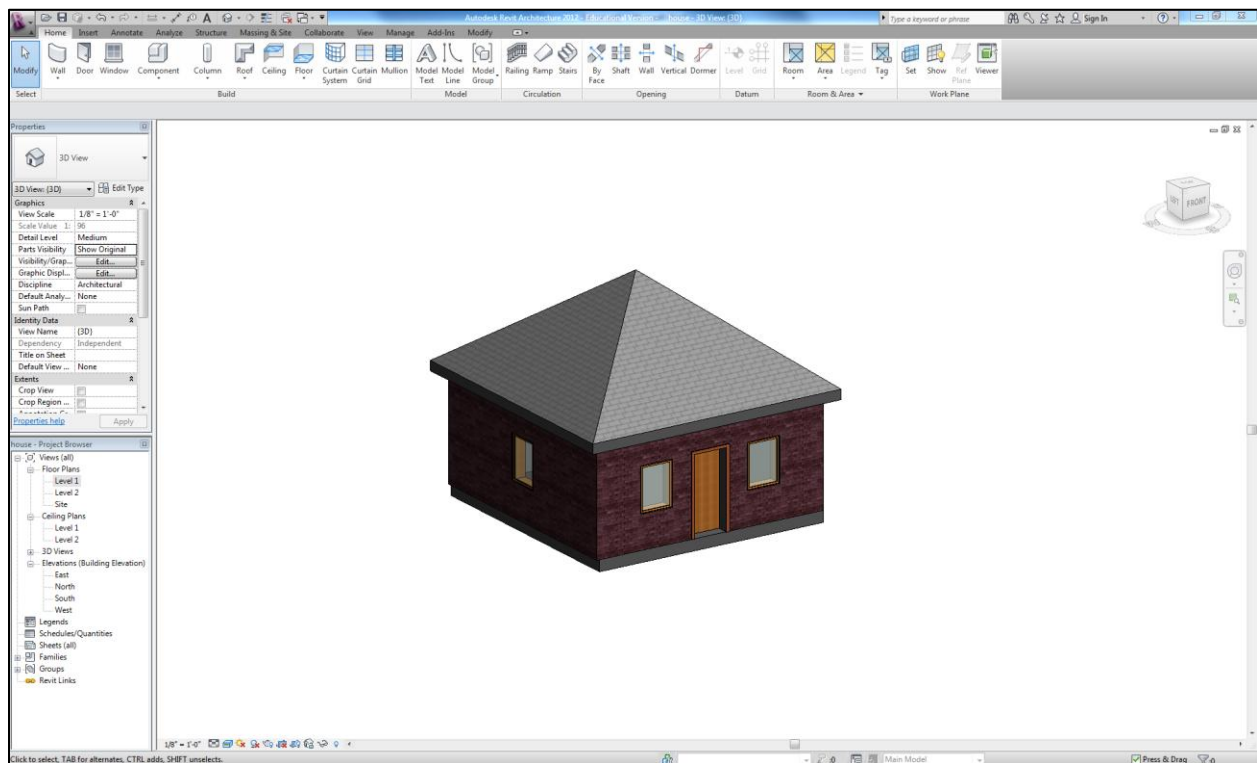


Image 1 *Revit Architecture* model (3D view)

Step 2: Export the *Revit Architecture* model as a .dxf file by clicking on the purple 'R' drop down menu in the top left corner of the screen, click on Export, click on CAD Formats, select DXF files.

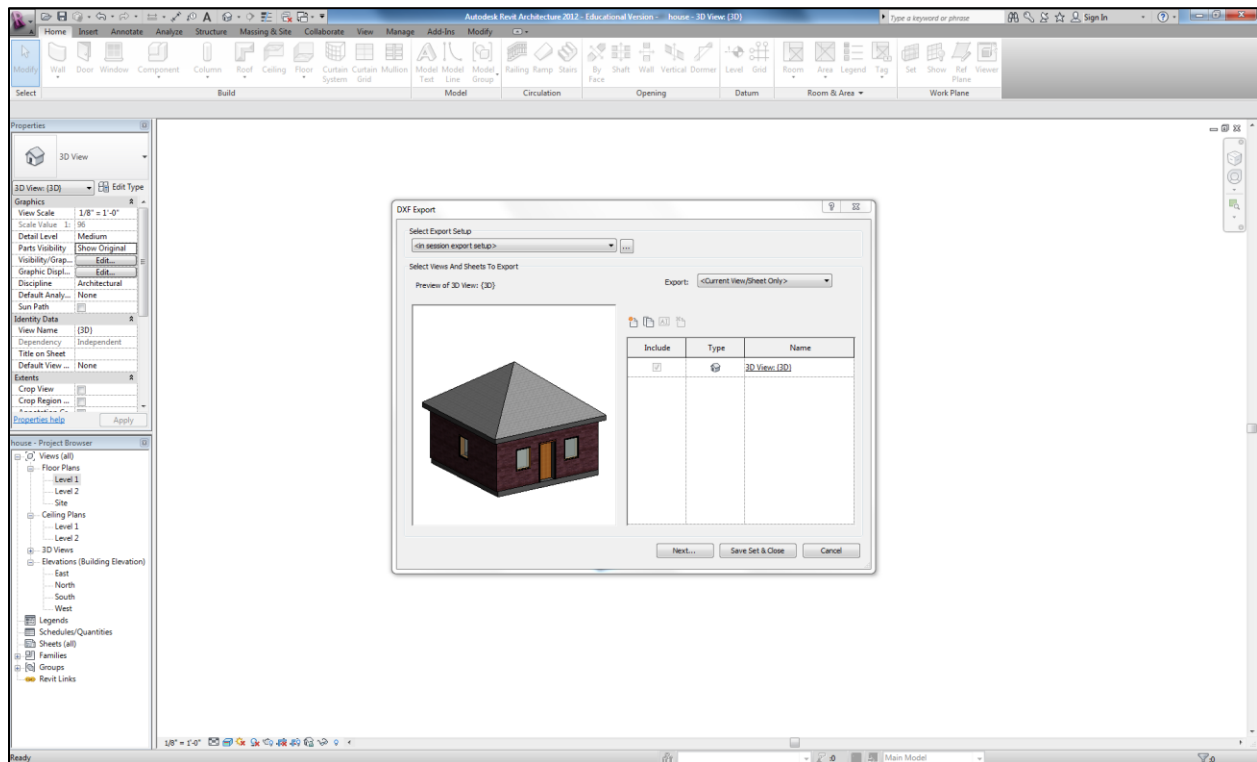


Image 2 .dxf export

Step 3: Click Next and then select the file path for the correct location to be saved then click Okay.

Step 4: Open *Google SketchUp*.

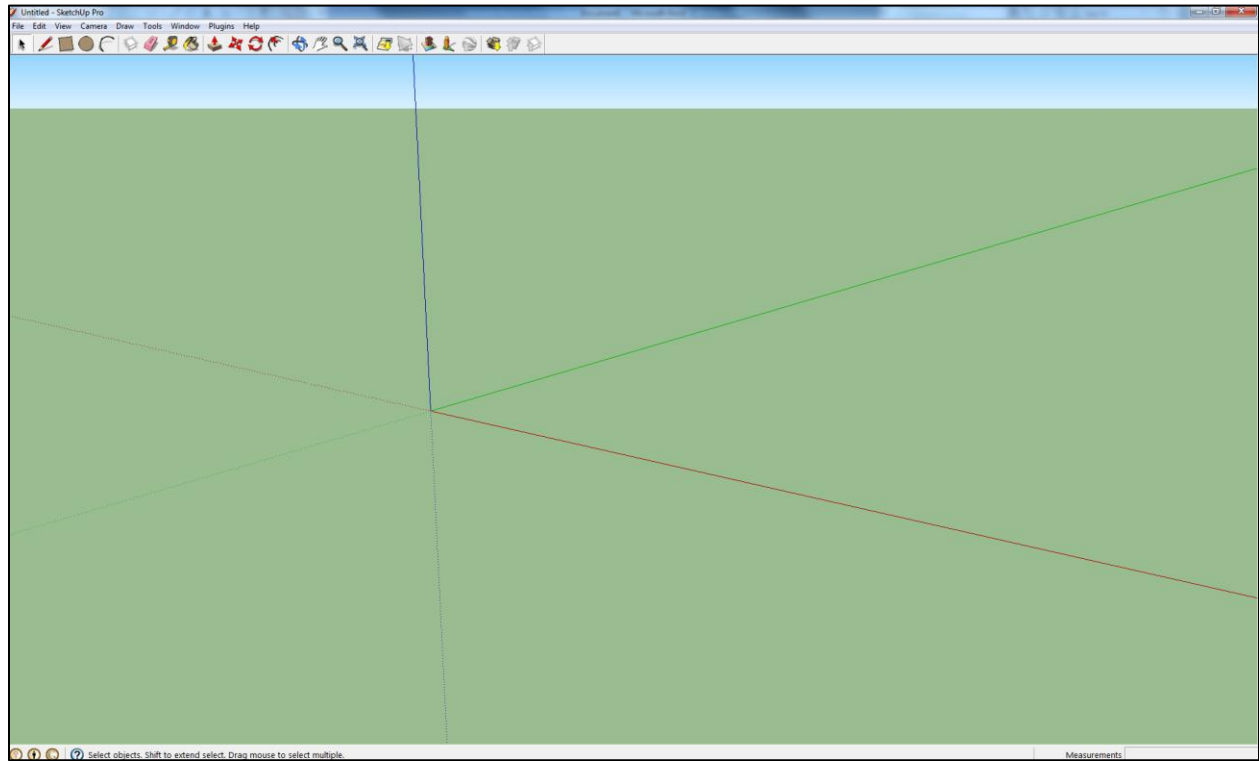


Image 3 *Google SketchUp*

Step 5: In the top left corner, click on File, then click Import. Search for your saved *Revit Architecture* .dxf file. Make sure that the box title 'File of type' has AutoCAD File (*.dwg, *.dxf) selected. Click Open.

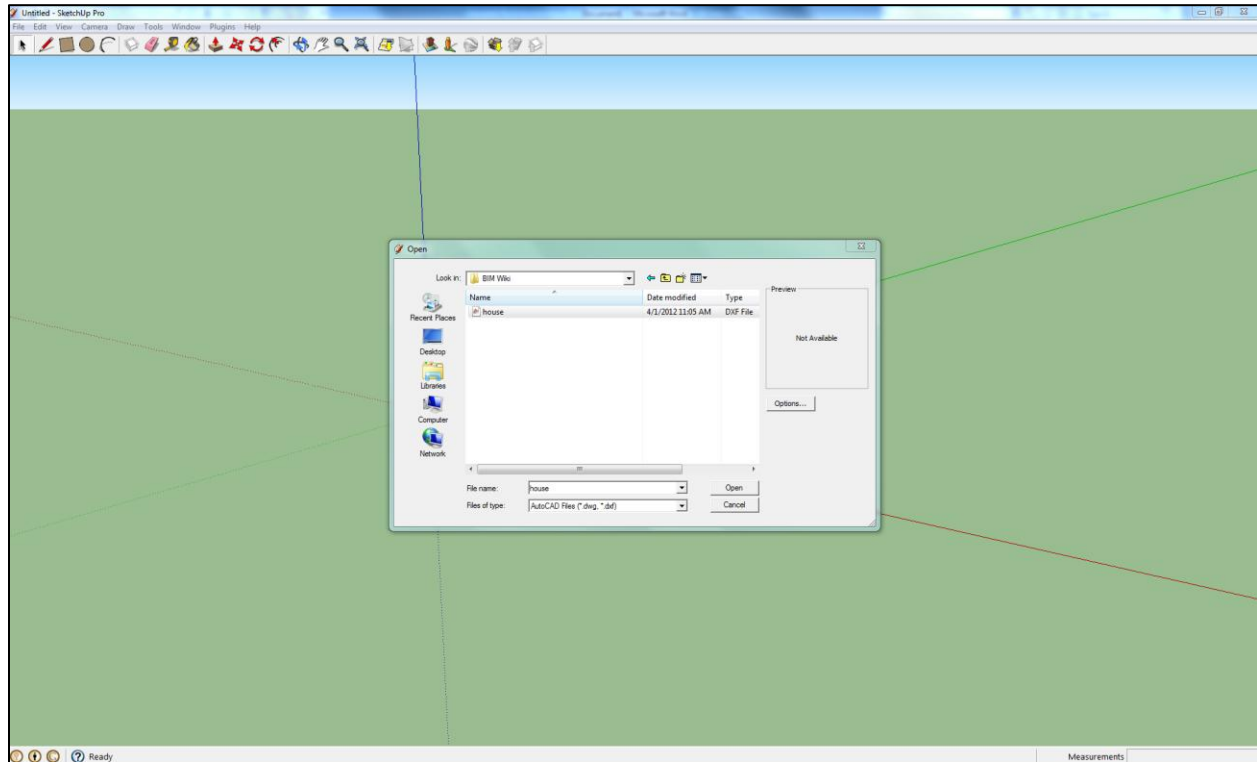


Image 4 Importing .dxf file

Step 6: View your *Revit Architecture* model in *Google SketchUp*.

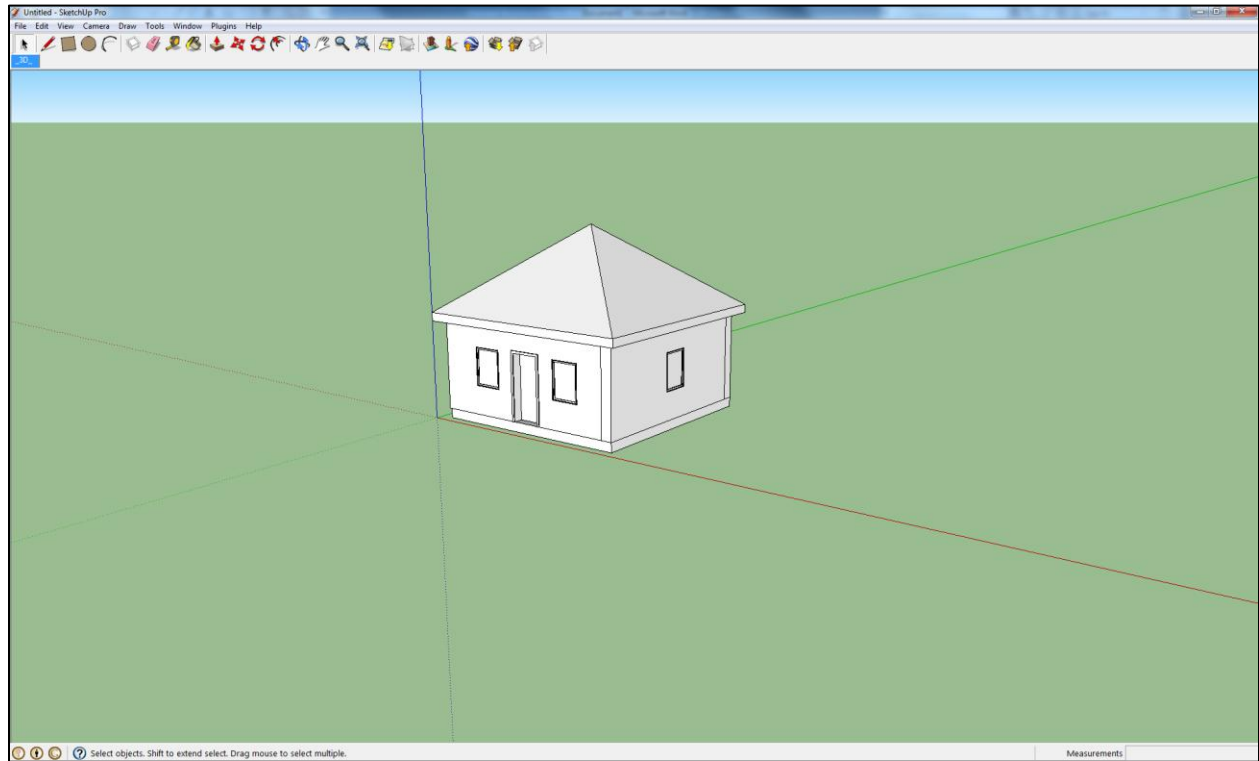


Image 5 *Revit Architecture* model imported into *Google SketchUp*

Step 7: If the new *Google SketchUp* model is to be edited, it is automatically imported as the separate elements (floor, walls, door, windows, ceiling, roof) as it was created in *Revit Architecture*.

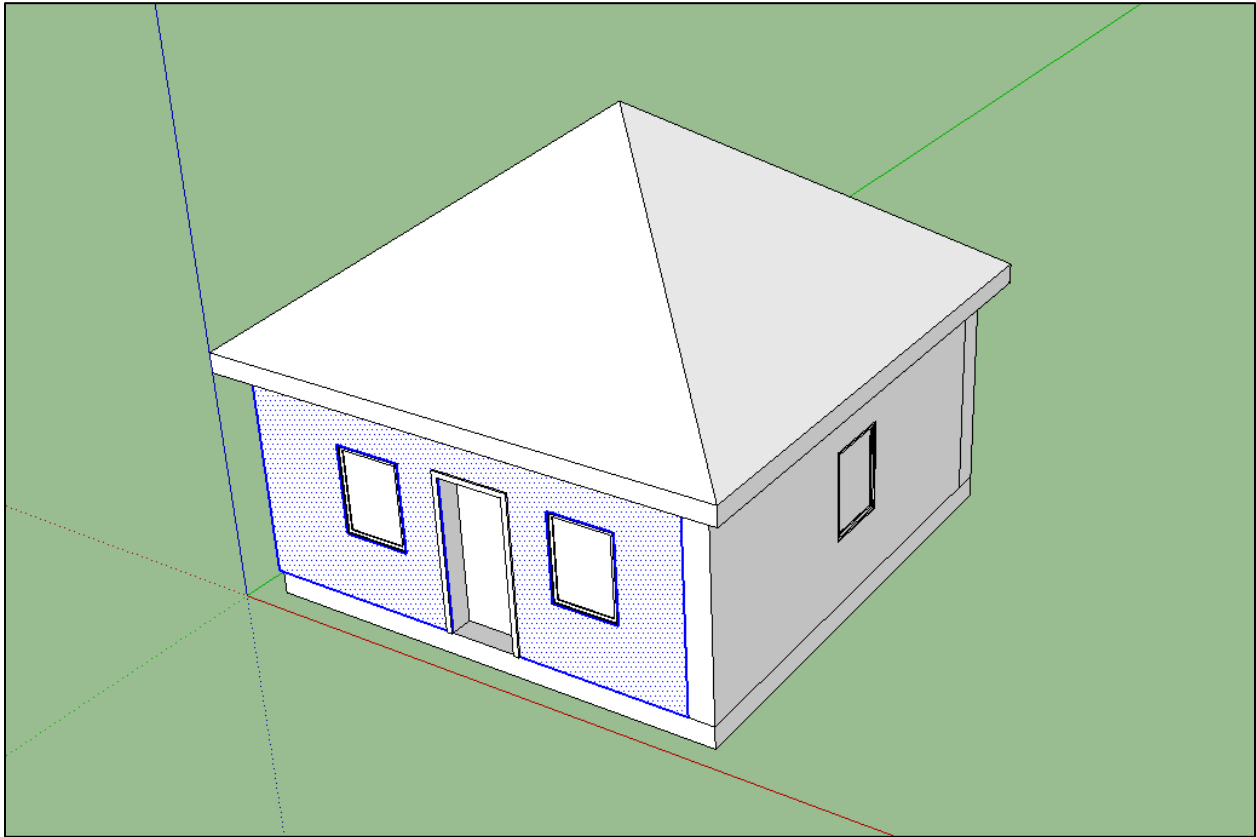


Image 6 *Google SketchUp* model with individual wall selected for editing

Step 8: If the new *Google SketchUp* model should remain a single component, highlight the entire model by dragging the cursor from right to left and encasing the model with the box created. Then hit the letter 'g' on the keyboard. Name the new component as desired.

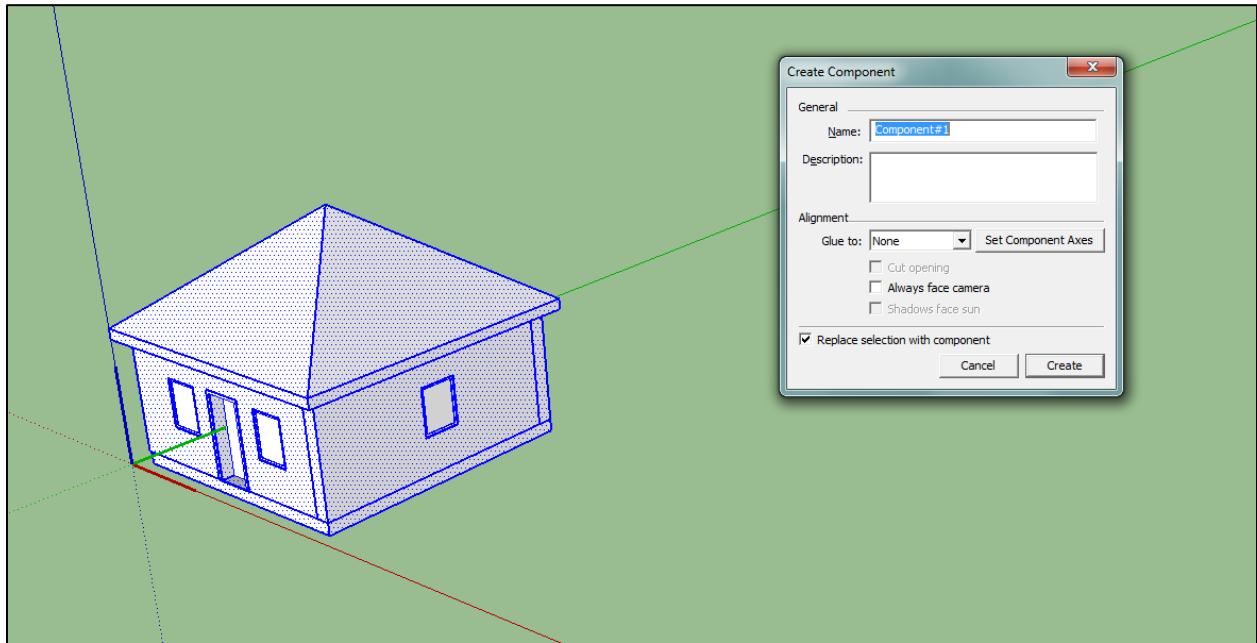


Image 7 *Google SketchUp* model as a single component